



70mm Double Rebated  
Flood Defence Composite Door



# FLOOD DEFENCE COMPOSITE DOOR

Choosing a door for your home is a very important and difficult decision, particularly given the number of options available. You need to know you are choosing the right door for your home, a door that is as secure as it is stylish and that is designed to stand the test of time.

The 70mm Flood Divert Composite Door has been developed to the highest of standards, using the very best materials to ensure you get everything you are looking for and more;

## Stunning Aesthetics

The 70mm Flood Divert Composite Door is available in various door styles and complete range of colours. Furthermore, there are 4 triple glazed laminated glass ranges to choose from to truly personalise your door. Adding in the low maintenance and durability that comes with choosing a GRP composite door makes The 70mm Flood Divert Composite Door a very appealing option.

## Enhanced Security

The door leaf and glazing system are major components when part of a door set and have a proven ability to achieve PAS24:2012, industries enhanced security standard, a prerequisite in attaining certification to Secured by Design a police initiative to protect against unlawful intrusion.

## Impressive Kerb Appeal

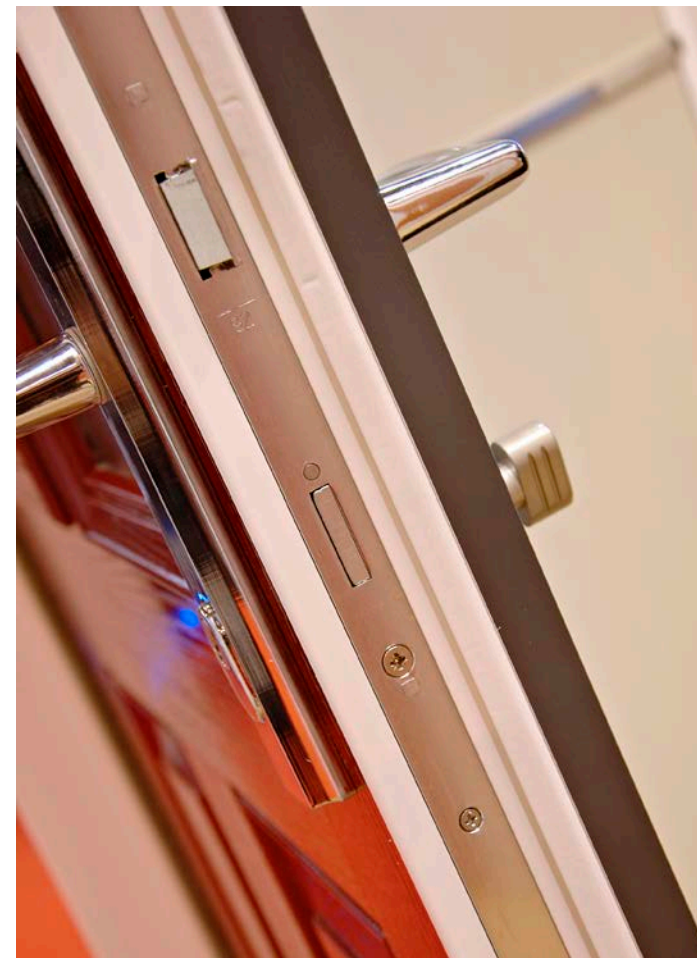
The woodgrain finish on a 70mm Flood Divert Composite Door is developed from oak tree grain, creating a beautiful authentic appearance. You'll find the same woodgrain effect, moulding design and exact colour match on the slim glazing cassette too, giving a seamless and elegant finish.

## Superb Thermal Efficiency

When it comes to energy efficiency, the 70mm Flood Divert Composite Door is the best choice you can make, proven in independent testing to be substantially more thermally efficient than traditional timber doors and timber core composite doors. See page 4 for more information.

## Ultimate Flood Defence

The 70mm Flood Divert Composite Door has an excellent weather seal thanks to its double rebate and the water resistant polymer composite rails protect its core. This means it won't suffer from water absorption which can lead to skin delamination and cause functional problems often associated with lower quality products. Your 70mm Flood Divert Composite Door will keep the weather at bay and will stay looking good for longer.



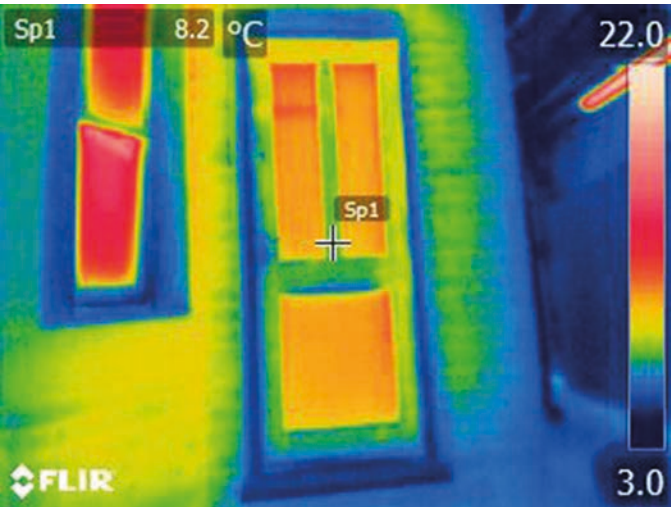


# ENERGY EFFICIENCY

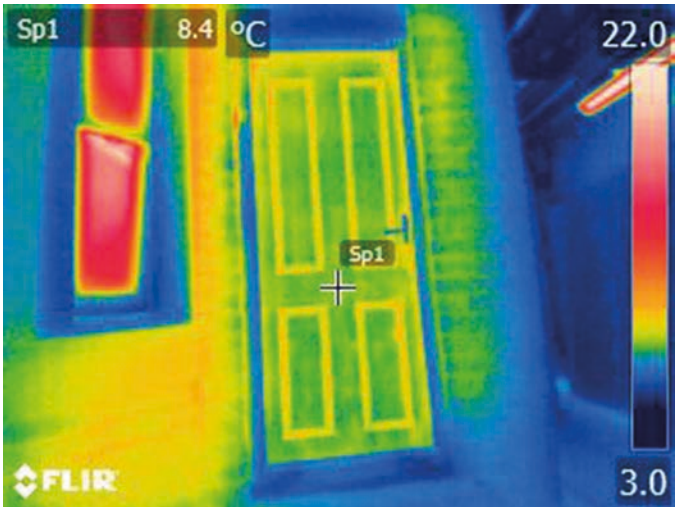
The 70mm Flood Divert Composite Door is more energy efficient than a traditional timber door or a solid timber core composite door – fact!

We all worry about how much energy our homes use. The rising cost of our energy bills and our impact on the environment mean we want to keep our consumption to a minimum. One of the best ways to do this is to choose thermally efficient products that keep warmth in and cold out, saving money and emissions.

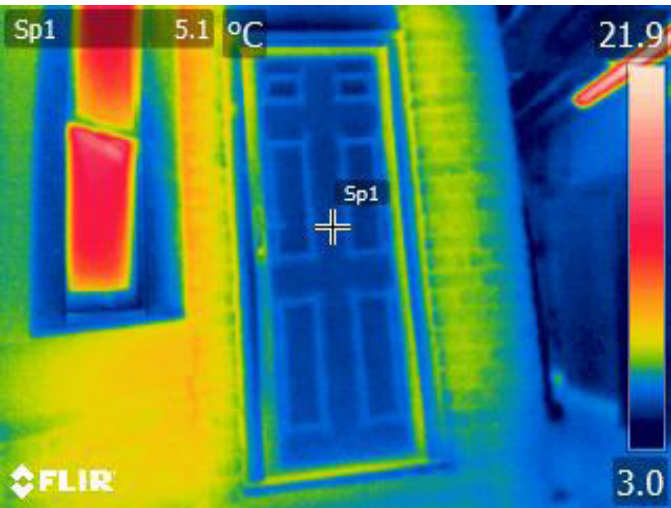
When it comes to thermally efficient doors, The 70mm Flood Divert Composite Door is the best choice you can make.



Traditional timber panelled door



Solid timber core composite door



The 70mm Flood Divert Composite Door

Photographs show the thermal efficiency of each of the doors we tested. The darker the blue, the less heat is being lost. Reds and greens – the predominant colours on the timber door – indicates high heat loss.

# SLEEP TIGHT

The 70mm Flood Divert Composite Door features a **double rebate**, is **57% thicker than a standard door** and has a **high density core** which not only makes your home energy efficient, but is also proven to reduce the impact of outdoor noise in your home.

Every 70mm Flood Divert Composite Door also features **50mm triple glazing** to further improve the acoustic insulation of your home.





# DOOR COLOUR RANGE

							
Distinction White	Distinction Black	Distinction Red	Distinction Blue	Distinction Green			
							
RAL 7035 Light Grey	RAL 7042 Traffic Grey A	RAL 7005 Mouse Grey	Distinction Anthracite Grey	RAL 7021 Black Grey	RAL 9001 Cream	RAL 7044 Silk Grey	BS 04 B 17 Dusty pink
							
BS 04 B 21 Sable	BS 08 B 15 Magnolia	BS 08 B 17 Honey Beige	RAL 6002 Leaf Green	RAL 6024 Traffic Green	RAL 6019 Pastel Green	RAL 1020 Olive Yellow	Distinction Chartwell
							
BS 16 C 33 Duck Egg	RAL 6034 Pastel Turquoise	RAL 5018 Turquoise Blue	RAL 5011 Steel Blue	RAL 5002 Ultramarine Blue	RAL 5009 Azure Blue	RAL 5015 Sky Blue	RAL 5023 Distant Blue
							
RAL 5024 Pastel Blue	RAL 4009 Pastel Violet	RAL 4005 Blue Lilac	RAL 4008 Signal Violet	RAL 4007 Purple Violet	RAL 3005 Wine Red	RAL 4002 Red Violet	RAL 3003 Ruby Red
							
RAL 3020 Traffic Red	RAL 2002 Vermilion	RAL 1033 Dahlia Yellow	RAL 1021 Rape Yellow				

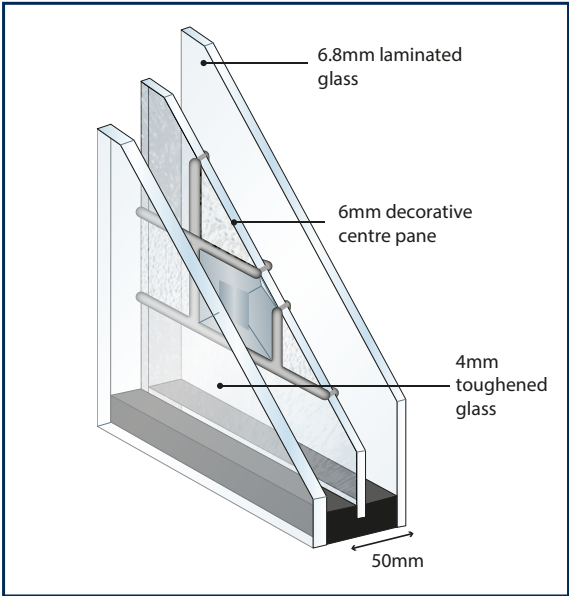
\*Colours shown in this brochure should be used for guidance only as the limitations in photographic and printing processes may mean that colours of products vary from those illustrated.

# GLASS OPTIONS

Your choice of decorative laminated glazing panels is the perfect finishing touch and a beautiful focal point.

We offer a range of four, laminated as standard glass designs, covering everything from the traditional to the contemporary. Each design perfectly complements our door styles and creates a stylish finish. All have slim sightlines to maximise light transmission and their frame uses the same moulding design and woodgrain effect as the rest of the door for a sophisticated and seamless finish.

Each glass is 50mm in thickness, that's more than double the thickness of our standard glass. All of the ranges are triple glazed, so the delicate decorative panel is encapsulated between two clear panes.



**Kara**  
Decorative triple glazing featuring clear bevels and textured glass with brass or zinc coming.



**Monza**  
Decorative triple glazing featuring grey bevels and textured glass.



**Aspen**  
Decorative triple glazing featuring grey bevels and textured glass.



**Edwardian**  
Decorative triple glazing featuring various coloured and textured glass.





# SOLID STYLES

Far from being just the safe choice, a solid door is the ultimate expression of confidence. Without decorative glazing to draw the eye you can focus on the beautiful wood-grain finish.



4 Panel



6 Panel



Flush White

Flush doors available in standard white and bespoke colours only.



Cottage White

Cottage doors available in standard white and bespoke colours only.

VISIT OUR WEBSITE FOR MORE INFORMATION

[www.flooddivert.co.uk](http://www.flooddivert.co.uk) 

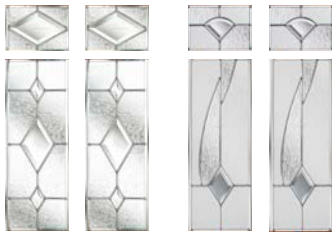


# CLASSICAL HALF GLAZED

This traditional six-panelled design has an attractive glass design that flows between the panels, creating a sophisticated and stylish appearance while still allowing the light to flood in.

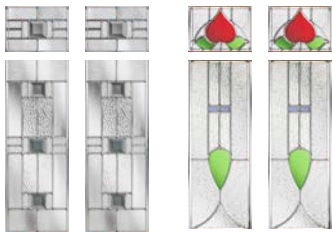


## GLASS PATTERNS AVAILABLE



**Kara**  
Clear glass and bevels with Brass or zinc coming

**Monza**  
Grey bevels with various textured glass pieces and zinc coming



**Aspen**  
Grey bevels with various textured glass pieces and zinc coming

**Edwardian**  
Various coloured and textured glass pieces with zinc coming

## ULTIMATE FLOOD DEFENCE

THANKS TO THE DOUBLE REBATED SEAL AND WATER RESISTANT POLYMER RAILS







# CLASSICAL

The Classical design is perfect when you want your door to have decorative glazing but also want to maintain your privacy. The crisp clean lines create a classic, elegant look.

## GLASS PATTERNS AVAILABLE



**Kara**  
Clear glass and bevels with Brass or zinc coming



**Monza**  
Grey bevels with various textured glass pieces and zinc coming



**Aspen**  
Grey bevels with various textured glass pieces and zinc coming



**Edwardian**  
Various coloured and textured glass pieces with zinc coming



VISIT OUR WEBSITE FOR MORE INFORMATION

[www.flooddivert.co.uk](http://www.flooddivert.co.uk)



# ESTEEM

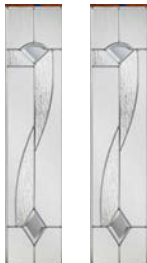
Our Esteem range offers understated style and is ideal if you want your door to make a statement of quiet confidence.



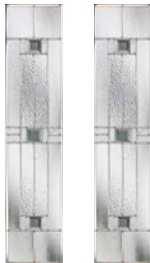
## GLASS PATTERNS AVAILABLE



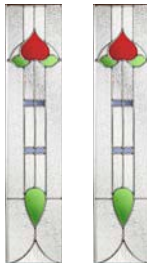
Kara  
Clear glass and bevels with Brass or zinc coming



Monza  
Grey bevels with various textured glass pieces and zinc coming



Aspen  
Grey bevels with various textured glass pieces and zinc coming



Edwardian  
Various coloured and textured glass pieces with zinc coming

STUNNING AESTHETICS

CHOOSE FROM OUR VARIED COLOUR RANGE

# CRAFTSMAN

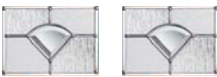
The Craftsman design is perfect for maintaining privacy but will also allow light fill your home.



## GLASS PATTERNS AVAILABLE



Kara  
Clear glass and bevels with Brass or zinc coming



Monza  
Grey bevels with various textured glass pieces and zinc coming



Aspen  
Grey bevels with various textured glass pieces and zinc coming



Edwardian  
Various coloured and textured glass pieces with zinc coming

KEEP THE WARMTH IN  
AND DRAUGHTS AND BREEZES OUT!

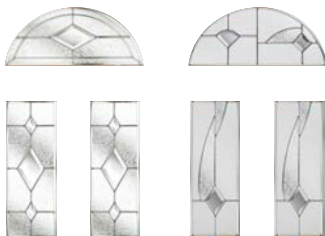


# ECLAT

The Eclat door is a classic choice that offers a little bit more. The pleasing combination of glass shapes lets you make your front door a focal point for the eye, making a beautifully welcoming statement.

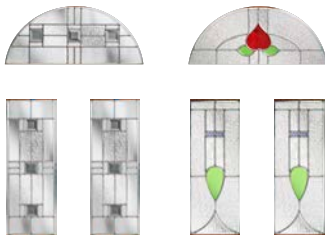


## GLASS PATTERNS AVAILABLE



Kara  
Clear glass and bevels with Brass or zinc coming

Monza  
Grey bevels with various textured glass pieces and zinc coming



Aspen  
Grey bevels with various textured glass pieces and zinc coming

Edwardian  
Various coloured and textured glass pieces with zinc coming

## KERB APPEAL

IMPRESSIVE WOODGRAIN FINISH DEVELOPED FROM OAK TREE GRAIN

# ECLAT ARCH

When your door needs to offer privacy, the Eclat Arch is the perfect choice. The decorative glass arch adds interest without revealing what's beyond.



## GLASS PATTERNS AVAILABLE



Kara  
Clear glass and bevels with Brass or zinc coming

Monza  
Grey bevels with various textured glass pieces and zinc coming



Aspen  
Grey bevels with various textured glass pieces and zinc coming

Edwardian  
Various coloured and textured glass pieces with zinc coming

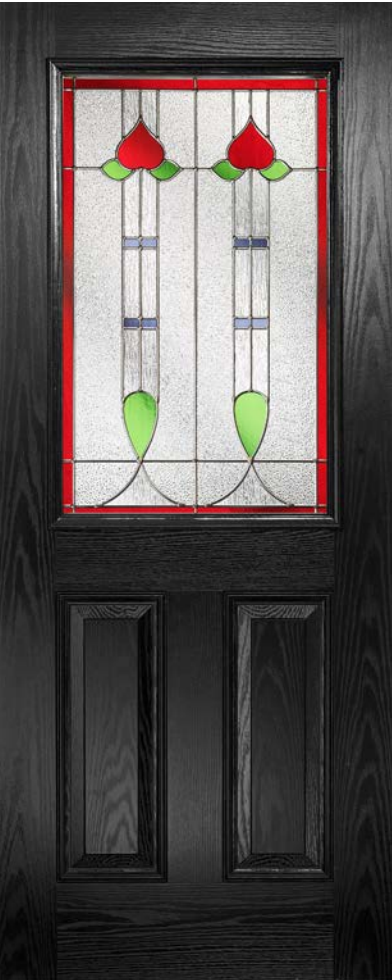
## ENERGY EFFICIENT

37% MORE THERMALLY EFFICIENT THAN A TIMBER PANELLED DOOR

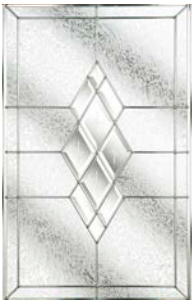


# ELEGANCE

Our Elegance secure design is equally popular as a front door and a back door. It maximises the light that floods into your home, while its classically simple lines are perfect when you want understated perfection.



## GLASS PATTERNS AVAILABLE



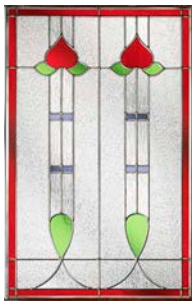
Kara  
Clear glass and  
bevels with Brass or  
zinc coming



Monza  
Grey bevels with  
various textured  
glass pieces and  
zinc coming



Aspen  
Grey bevels with  
various textured  
glass pieces and  
zinc coming



Edwardian  
Various coloured  
and textured glass  
pieces with zinc  
coming

KEEP THE WARMTH IN  
AND DRAUGHTS AND BREEZES OUT!

# ELEGANCE ARCH

The scale of the beautiful glazed pane in the Elegance Arch design provides a wonderfully dramatic focal point that welcomes visitors to your home as well as letting light flood in.



## GLASS PATTERNS AVAILABLE



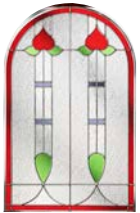
Kara  
Clear glass and  
bevels with Brass or  
zinc coming



Monza  
Grey bevels with  
various textured  
glass pieces and  
zinc coming



Aspen  
Grey bevels with  
various textured  
glass pieces and  
zinc coming



Edwardian  
Various coloured  
and textured glass  
pieces with zinc  
coming

BEAUTIFULLY LOW MAINTENANCE  
DESIGNED TO MINIMISE CLEANING AND UPKEEP



# ESC19-70

Our ESC19-70 range offers understated style and is the ideal solution for a back door, yet is a perfect choice for a front door too.



## GLASS PATTERNS AVAILABLE



Kara  
Clear glass and bevels with Brass or zinc coming



Monza  
Grey bevels with various textured glass pieces and zinc coming



Aspen  
Grey bevels with various textured glass pieces and zinc coming



Edwardian  
Various coloured and textured glass pieces with zinc coming

Available in standard white or bespoke colours only

## DECORATIVE GLAZING

THE PERFECT FINISHING TOUCH AND A BEAUTIFUL FOCAL POINT.

# ESC22-70

Like wearing single piece of jewellery, our ESC22-70 range has a small decorative glazing panel that makes a big statement. It welcomes visitors with delicate visual interest and brings a gleam of light into your home.



## GLASS PATTERNS AVAILABLE



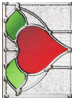
Kara  
Clear glass and bevels with Brass or zinc coming



Monza  
Grey bevels with various textured glass pieces and zinc coming



Aspen  
Grey bevels with various textured glass pieces and zinc coming



Edwardian  
Various coloured and textured glass pieces with zinc coming

Available in standard white or bespoke colours only

## VISIT OUR WEBSITE FOR MORE INFORMATION

[www.flooddivert.co.uk](http://www.flooddivert.co.uk)



# RE04-70

Like wearing single piece of jewellery, our RE04-70 range has a small decorative glazing panel that makes a big statement.



## GLASS PATTERNS AVAILABLE



Kara  
Clear glass and bevels with Brass or zinc coming



Monza  
Grey bevels with various textured glass pieces and zinc coming



Aspen  
Grey bevels with various textured glass pieces and zinc coming



Edwardian  
Various coloured and textured glass pieces with zinc coming

Available in standard white or bespoke colours only

## CHOICE

VARIOUS DOOR STYLES AND GLAZING OPTIONS TO CHOOSE FROM

# REC06-70

Our REC06-70 range is an understated style and is ideal if you want your door to make a statement of quiet confidence.



## GLASS PATTERNS AVAILABLE



Kara  
Clear glass and bevels with Brass or zinc coming



Monza  
Grey bevels with various textured glass pieces and zinc coming



Aspen  
Grey bevels with various textured glass pieces and zinc coming



Edwardian  
Various coloured and textured glass pieces with zinc coming

Available in standard white or bespoke colours only

## EXCEPTIONAL THERMAL EFFICIENCY

KEEPING THE WARMTH IN AND THE COLD OUT



# RE08-70

Our RE08-70 range is popular as a front door and a back door. It maximises the light that floods into your home, while its classically simple lines are perfect when you want understated perfection.



## GLASS PATTERNS AVAILABLE



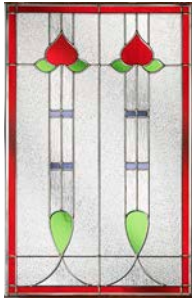
Kara  
Clear glass and bevels with Brass or zinc coming



Monza  
Grey bevels with various textured glass pieces and zinc coming



Aspen  
Grey bevels with various textured glass pieces and zinc coming



Edwardian  
Various coloured and textured glass pieces with zinc coming

**COLOUR**  
OVER 36 BESPOKE COLOUR OPTIONS

# REC15-70

Our REC15-70 range is a classical design and is the ideal solution for a back or front door.



## GLASS PATTERNS AVAILABLE



Kara  
Clear glass and bevels with Brass or zinc coming



Monza  
Grey bevels with various textured glass pieces and zinc coming



Aspen  
Grey bevels with various textured glass pieces and zinc coming



Edwardian  
Various coloured and textured glass pieces with zinc coming

VISIT OUR WEBSITE FOR MORE INFORMATION  
[www.flooddivert.co.uk](http://www.flooddivert.co.uk)





## Features & Benefits:

- 70mm Door System Profile
- Multi Point Locking System
- Bespoke Gasket Seal Arrangement
- ABS Snap Secure Secured By Design Barrels TS007 – 3 STAR KM 586153
- DDA Elongated Handle
- Door Furniture available in White, Chrome, Gold, Silver and Black

# TECHNICAL INFORMATION

## Construction

Every 70mm Flood Divert Composite Door is manufactured to the highest of standards to ensure it is strong, durable and secure.

The door has a perimeter sub-frame of a solid, water-resistant polymer material, which is reinforced with Laminated Veneered Lumber (LVL). A thermoset GRP skin is bonded to this sub-frame and the core of the door is then filled with high density, 100% CFC-free polyurethane foam. Finally, water resistant polymer composite rails protect the core from damage or water absorption.

The door's core is what makes it so thermally efficient and so good at reducing sound. In fact, as you can see from the images on page 4, it is the most thermally efficient door on the market, increasing your home's energy efficiency and saving you money on your energy bills.

The high impact resistant thermoset GRP skin not only keeps your door looking good, it will not expand and contract laterally so your door will not crack or delaminate. All standard solid colours are pre-pigmented and beautifully through-coloured. All other colours are over sprayed with a durable paint that will not peel or crack.

## Technical figures

The 70mm Flood Divert Composite Door has a wealth of facts and figures that prove its quality. The door:

- achieves BS 6375-1 for weather tightness, air, wind and water
- reduces outdoor noise by an average of 31dB

- achieves Global Warming Potential (GWP) score of less than 5
- achieves Ozone Depletion Potential (ODP) score of zero
- meets UK Building Regulations U value requirements of 1.6 W/M2K

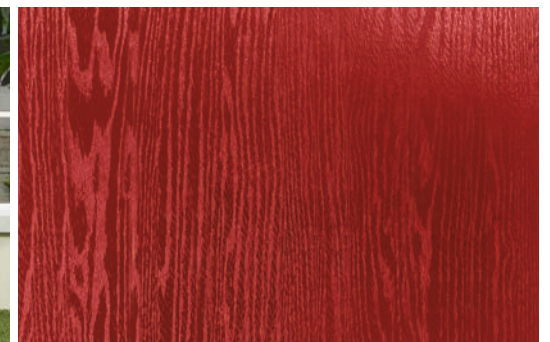
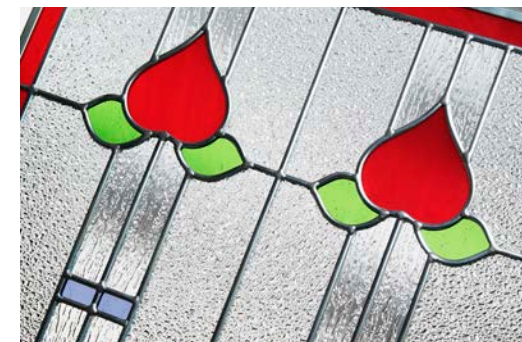
In other words, everything about a 70mm composite door has been designed to enhance your home for years to come.

## Care and maintenance

Your 70mm Flood Divert Composite Door has been designed to be easy to maintain. To keep your door clean, prolong the life of the surface finish and protect your warranty, we recommend you wash it regularly using warm soapy water (washing up liquid is ideal) and a soft, lint-free cloth. If you live in a coastal area, in a heavily industrialised area or near a main road, you may need to clean your door more frequently.

It is important that you DO NOT use any of the following on your door:

- abrasive cleaners or scouring pads
- any type of bleach or solvent (e.g. white spirit, methylated spirit, cellulose thinners, acetone or nail varnish remover)
- any type of adhesives or tack for providing temporary protection or fixing of seasonal or other decorations
- high pressure or steam cleaners







Unit G7b, Elvington Industrial Estate, Elvington, York, YO41 4AR  
01904 607681 | [www.flooddivert.co.uk](http://www.flooddivert.co.uk)

Door and glass colours shown in this brochure should be used for guidance only as the limitations in photographic and printing processes may mean that colours of products vary from those illustrated. All doors are provided with white internal skins, as standard. Bespoke coloured doors as per page 6 can be painted on one or both sides. All information in this publication is provided for guidance only and is given in good faith. Distinction Doors reserve the right to alter specifications without prior notice.

Reproduction of this brochure in whole or part is strictly forbidden without prior written consent. All images are for illustration purposes only.  
Published by The Flood Divert April 2018 V001.

Copyright © Distinction Doors April 2018.